

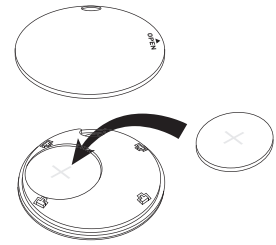
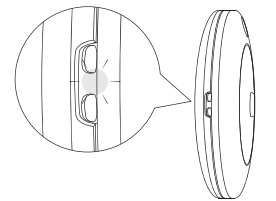
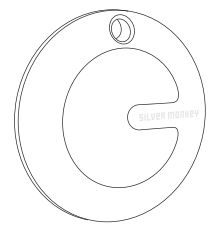
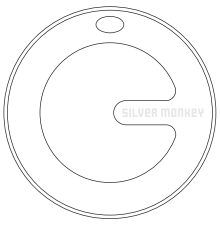
SILVER MONKEY



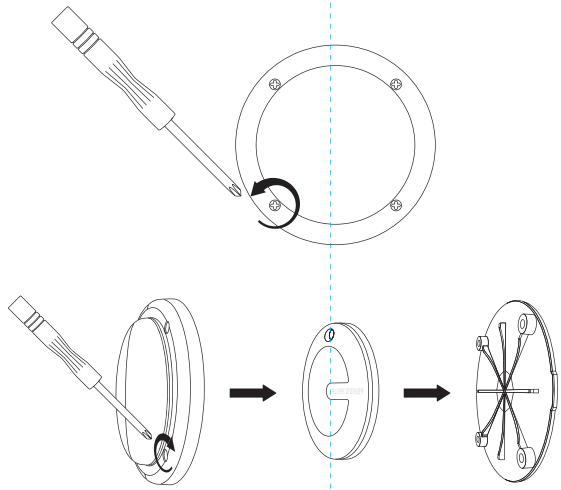
- EN User Manual
- PL Instrukcja Obsługi
- DE Bedienungsanleitung

SMA230

Manual version 2/20240326



Battery replacement



Mounting tag in case

English

Carefully read these instructions before using the product. Keep it for future reference.

Safety information

- Avoid direct contact with water and other liquids.
- Do not use the device in a humid environment.
- Keep the device out of the reach of children. They may swallow some parts.
- Use the device only in accordance with the operating instructions.
- If the device stops working properly - contact us.

Package contents

- Finder
- Case
- Battery CR2032
- User manual
- Screwdriver
- 4 screws
- Double-side tape

Quick instructions

Power On / Off
Press the Silver Monkey Tag Switch on/off button once to turn it on. It should long beep to indicate that it is powered on. To power off, hold the same button for 3 sec. You will hear 2-time beep to indicate that your Silver Monkey Tag is powered off.

Check For Updates
To use the Apple Find My app to locate this item, the latest version of iOS, iPadOS, or macOS is recommended. The Find Items app on Apple Watch requires the latest version of watchOS.

Add Your Silver Monkey Tag
Start The App, Open Find My app on your supported iPhone. Turn on the bluetooth and network of your phone.

Connect Your Silver Monkey Tag
Press the switch on/off button once to power on your Silver Monkey Tag, then "Add Other Item". Once your Silver Monkey Tag is located, tap "Connect", enter a name and choose an emoji for your Silver Monkey Tag and tap "Continue". Find My will ask for confirmation to your Apple ID, Tap "Agree" and "Finish", then your Silver Monkey Tag will be set up and ready to be used.

Find Silver Monkey Tag When It's Nearby
Open Find My app and select the "Items" tab or open the Find Items app on your Apple Watch. Tap your item from the list. Tap "Play Sound" to make your Silver Monkey Tag beep. Tap "Stop Sound" to stop the beeps once you find it.

Find Silver Monkey Tag Location
Open Find My app and select the "Items" tab or open the Find Items app on your Apple Watch. Tap your Silver Monkey Tag from the list. Your Silver Monkey Tag location will appear on the Map with a time stamp of when the item was located. To navigate to the Silver Monkey Tag's location, tap "Directions" to open Apple Maps.

Notifications
Enable "Notify When Left Behind". Open Find My app and select the "Items" tab or open the Find Items app on your Apple Watch. Tap on your item from the list. Under "Notifications", enable the "Notify When Left Behind" toggle. You will receive a notification when you leave your Silver Monkey Tag behind and it's no longer in range of your device.

Enable "Notify When Found"
Under "Notifications", enable the "Notify When Found" toggle. When your Silver Monkey Tag is seen by another Find My network device, you will receive a notification of its location. Note: "Notify When Found" can only be activated when your Silver Monkey Tag is out of range.

When Your Silver Monkey Tag Is Lost / Enabling "Lost Mode"
Open Find My app and select the "Items" tab or open the Find

Items app on your Apple Watch. Tap on your item from the list. Under "Lost Mode" tap "Enable". A screen detailing Lost Mode will pop up, tap "Continue". Enter your phone number or email address and tap "Next" You may enter a message that will be shared with the person that finds your item. Tap "Activate" to enable "Lost Mode". Note: When "Lost Mode" is enabled, "Notify When Found" is automatically enabled. Note: When "Lost Mode" is enabled, your Silver Monkey Tag is locked and cannot be paired to a new device.

Resetting Silver Monkey Tag
Remove The Silver Monkey Tag From Find My App. Open Find My app and select the "Items" tab. Tap on your item from the list. Please ensure "Lost Mode" is disabled. Scroll to the bottom of the screen and tap "Remove Item". A summary will open, tap "Remove" to confirm.

Factory Reset Your Silver Monkey Tag
After successfully removing the Silver Monkey Tag from Find My app. Press the Silver Monkey Tag's switch on/off button five times rapidly and then hold it a fifth time until you hear long beep. The Silver Monkey Tag is now reset and ready to be paired to a new Apple ID/iOS device.

Unwanted tracking
If any Find My network accessory separated from its owner is seen moving with you over time, you'll be notified. Find My will send a notification to your Apple devices. This feature is available on iOS or iPadOS 14.5 or later. This features were created specifically to discourage people from trying to track you without your knowledge.

Battery
The Tag uses a CR2032 battery. Only replace it with the same type of battery with the same voltage rating, making sure to correctly insert the battery (+ and -).

Battery replacement
01. Separate the product into two parts by using the gap between the top and bottom cover.
02. Remove the exhausted battery.

03. Insert a new CR2032 battery into the device, ensuring the positive side is facing upward.
04. Connect the bottom and top covers and gently snap them together.

Button and sound description

Power on	Click the button (long beep)
Power Off	Hold the button for 3 seconds (2-time beep)
Reset	Click the button 5 times then hold it until there is a long beep (please remove SM Tag from your "Find My" App before reset it)
Remove Item	Press "Remove Item" in the App (long beep)
Play sound	Press "Play Sound" in the App (13-time beep)

Specification

SMA230	
Working temperature	- 20 -+ 60°C
Case	Case with handle included
Bluetooth range	Up to 100 m
Working time	Up to 12 months on a single battery
Compatibility	Bluetooth 5.2 / iOS 14.5 or higher
Waterproof	IPX67
Battery	CR2032 (replaceable)
Material	PC + ABS
Apple certification	Yes – Find My
Dimension	37 mm x 37 mm x 9 mm

Warranty and technical support

Your product is covered by a 24-month manufacturer's warranty. For more information go to www.silvermonkey.com/support. If you have questions about using the product – contact us at kontakt@silvermonkey.com.
Manufacturer: Silver Monkey sp. z o.o., ul. Twarda 18, 00-105 Warszawa, Poland.

Disposal and the EU compliance statement

CE
We, as the manufacturer of this equipment, declare that it meets the rules of the appropriate EU directives. If you need a copy of the EU Declaration of Conformity – contact us.

Do not throw this equipment out with other household waste. This equipment is made from materials that may be harmful to the environment and human health, if the product is disposed of in the wrong way. When you need to throw away an old product, take it to a designated collection point.

To use the Find My app by Apple to locate this item, it is recommended to have the latest version of iOS, iPadOS, or macOS installed. The Find Items app on Apple Watch requires the latest version of watchOS.
Use of the "Works with Apple Find My" badge means that a product has been designed to work specifically with the technology identified in the badge and has been certified by the product manufacturer to meet Apple Find My network product specifications and requirements. Apple is not responsible for the operation of this device or use of this product or its compliance with safety and regulatory standards.
The Apple Find My network provides an easy, secure way to locate compatible personal items using the Find My app on your iPhone, iPad, Mac, iPod touch, or the Find Items app on Apple Watch.

