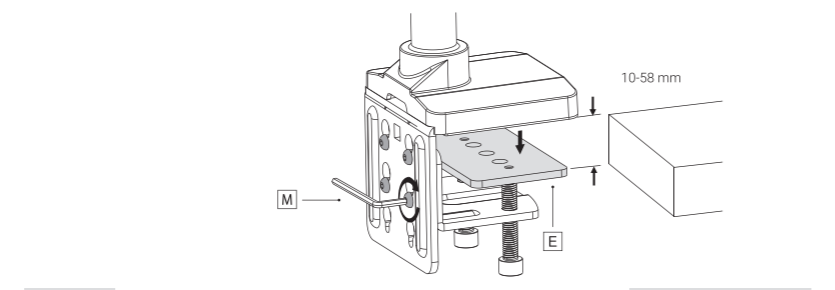
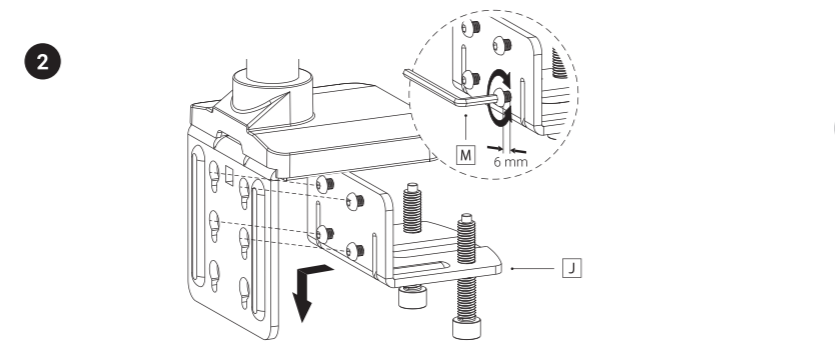
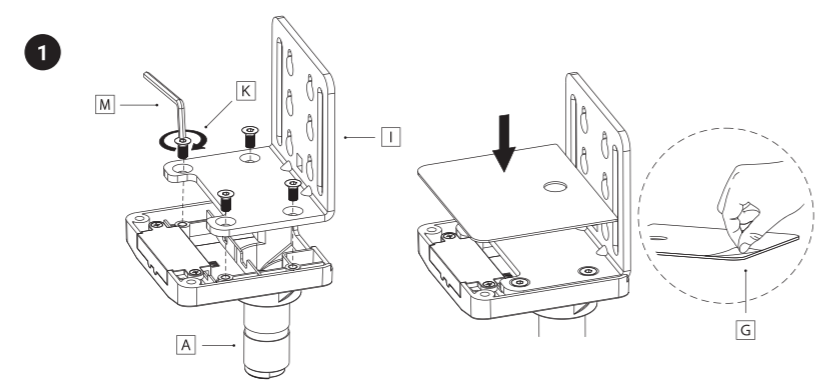


**SILVER MONKEY**

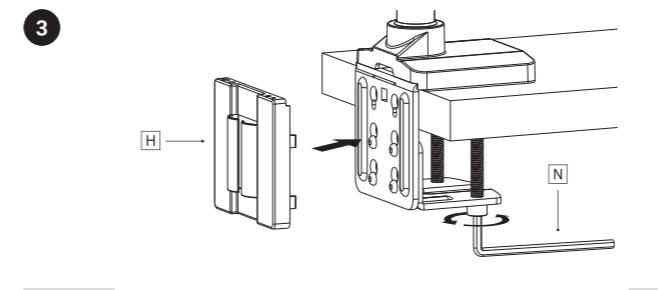
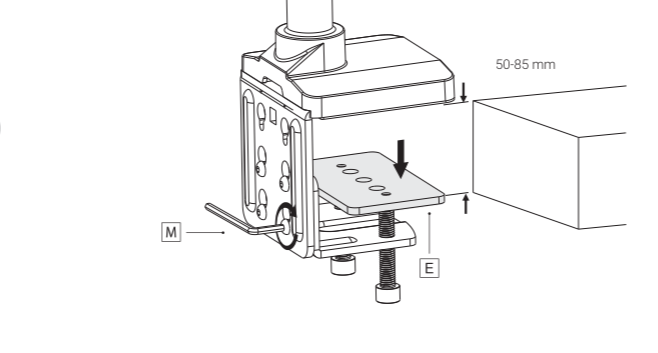
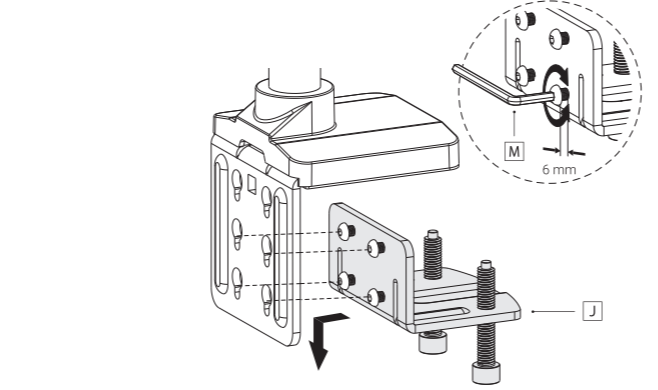
- EN User Manual
- PL Instrukcja Obsługi
- DE Bedienungsanleitung
- FR Manuel D'utilisation
- NL Gebruiksaanwijzing
- IT Manuale D'uso
- ES Manual de Instrucciones
- CZ Uživatelská Příručka
- SK Návod na Používanie
- RO Instrucțiuni de Utilizare

**UM-900**

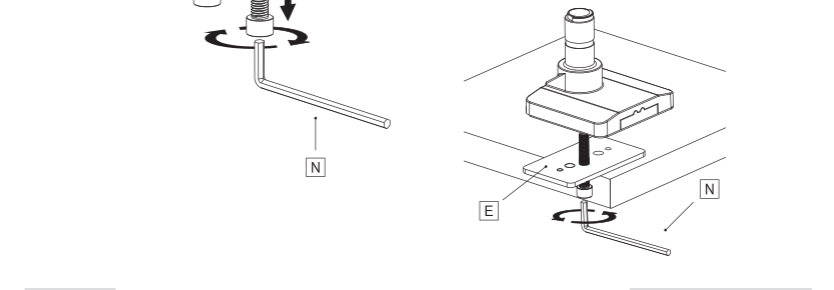
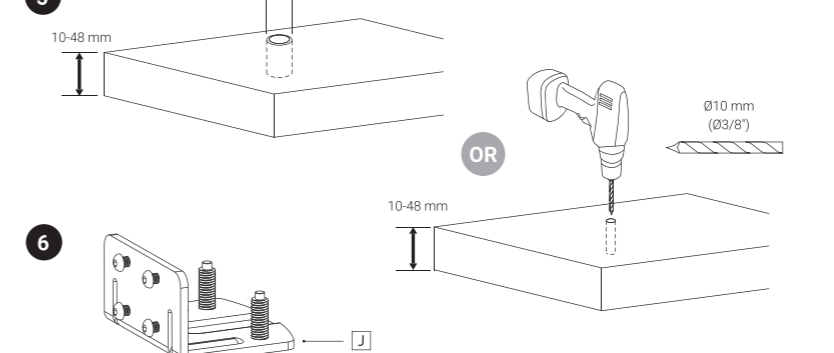
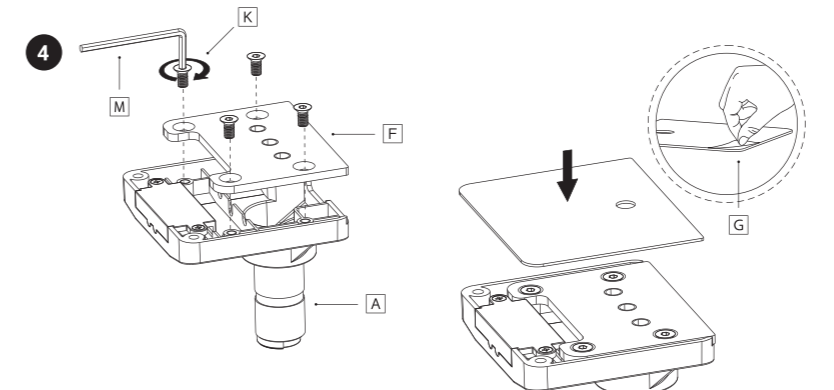
Manual version 1/2023/06/01



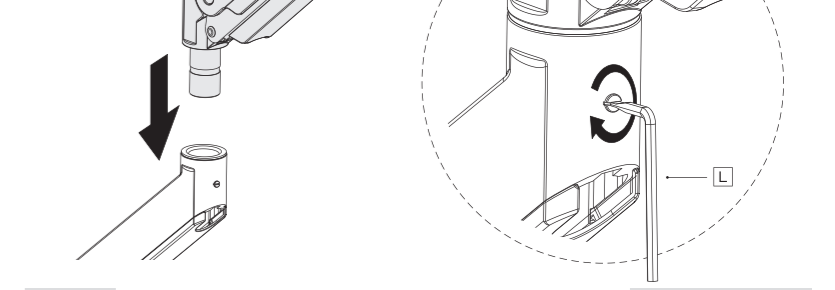
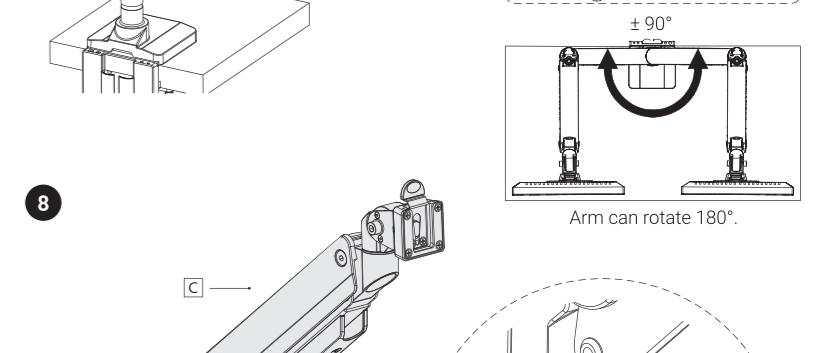
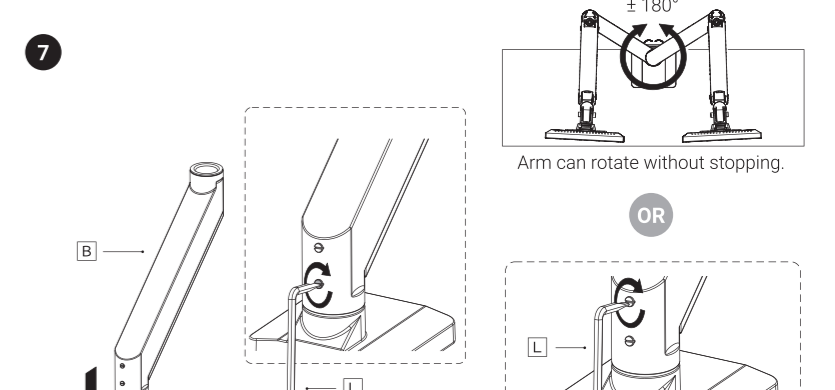
01 Clamp Mounting



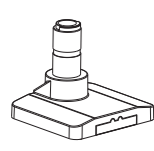
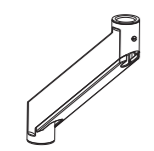
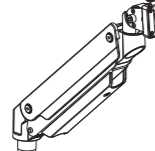

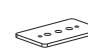


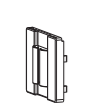
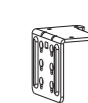
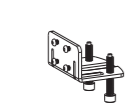

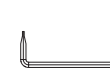



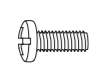

02 Clamp Mounting

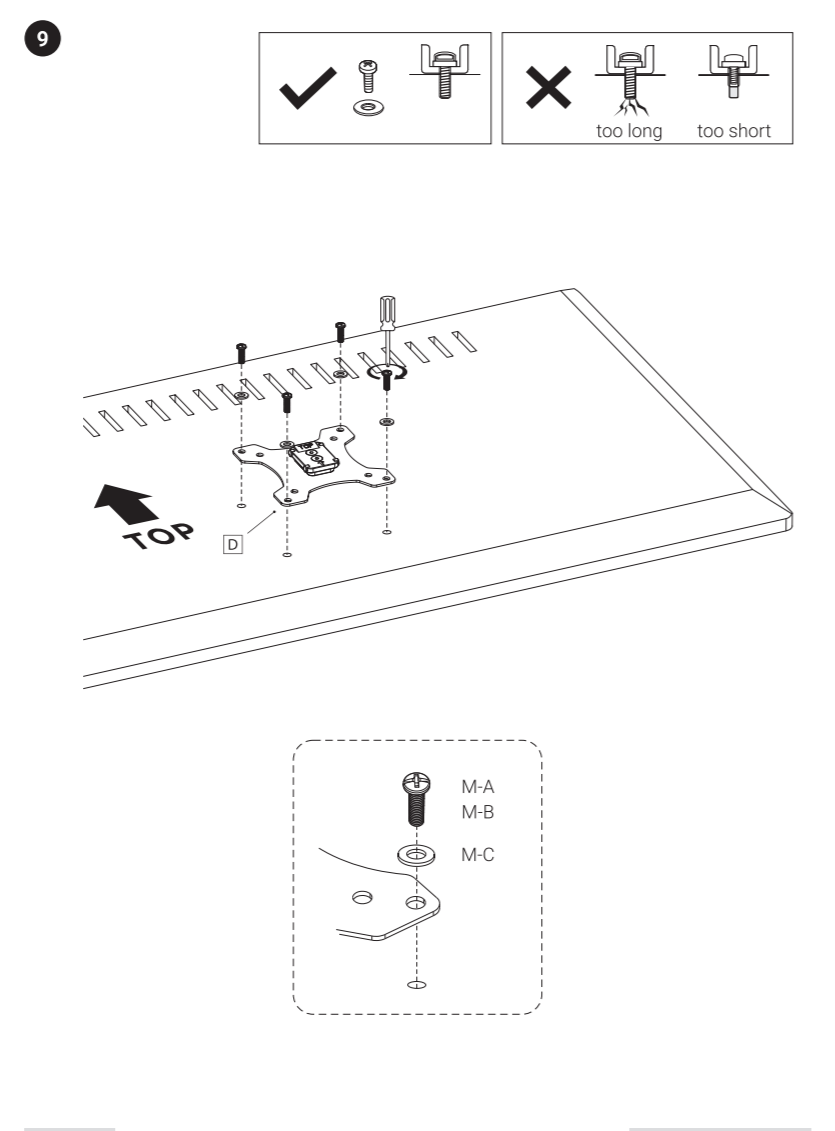


03 Grommet Mounting

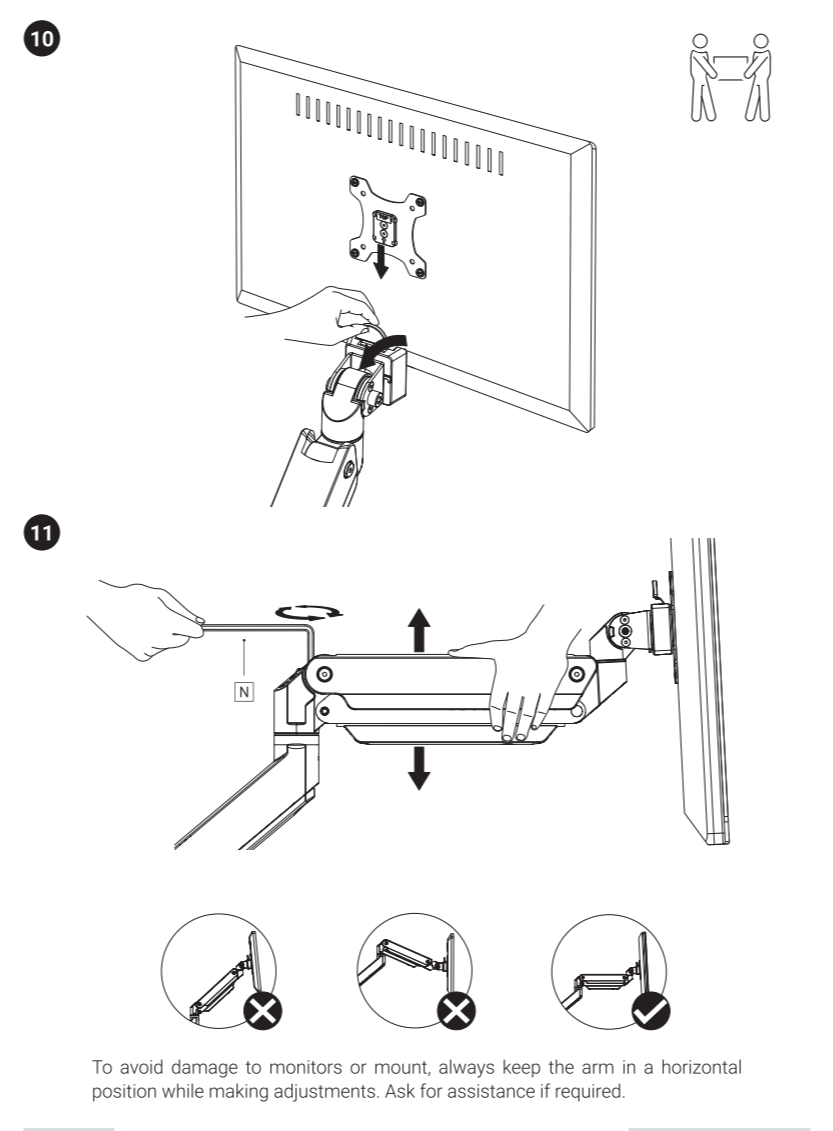


04 Screen Mounting

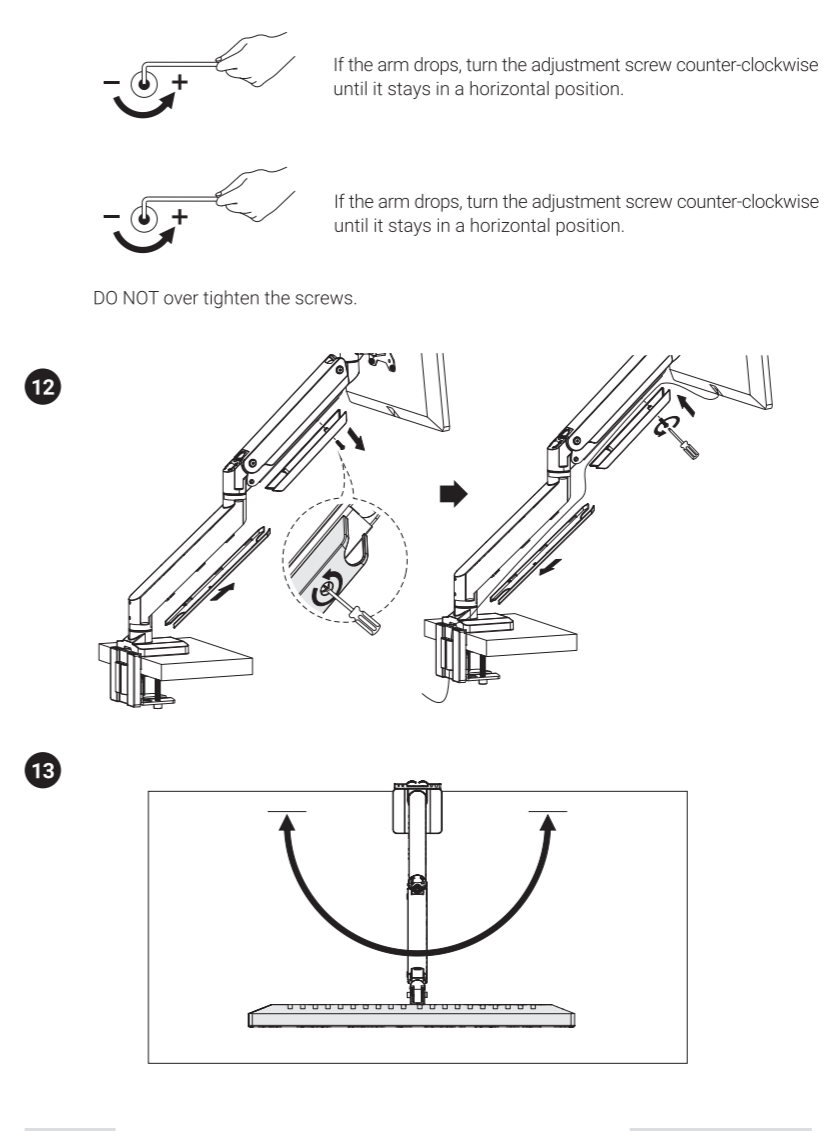
-  A x 1
-  B x 1
-  C x 1
-  D x 1
-  E x 1
-  F x 1
-  G x 1
-  H x 1
-  I x 1
-  J x 1
-  K x 4  
M6 x 12
-  L x 1  
3 mm
-  M x 1  
4 mm
-  N x 1  
6 mm
-  M-A x 4  
M4 x 12
-  M-B x 4  
M5 x 12
-  M-C x 4  
D5



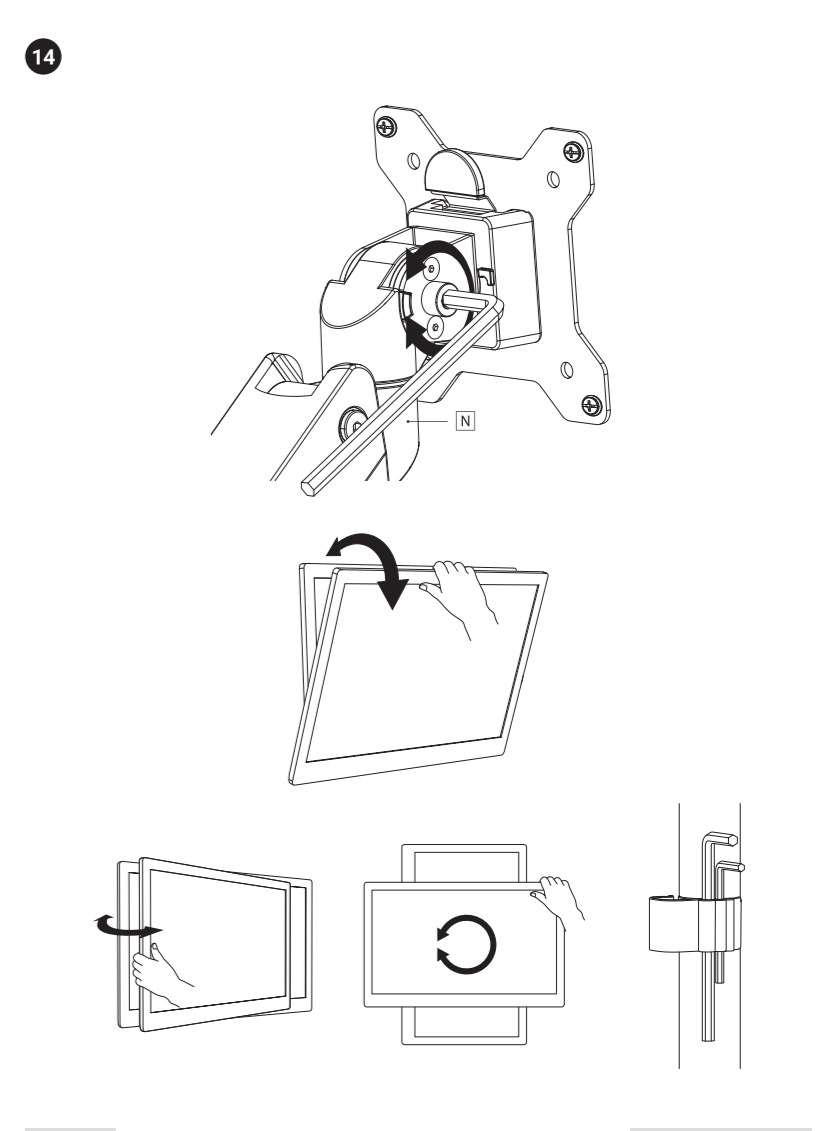
05 Screen Mounting



06 Screen Mounting



07 Screen Mounting



08 Screen Regulation

